


# COMMUNITY ORIENTATION COURSE



THERE ARE **TWO TYPES OF POOR** PEOPLE,  
THOSE WHO ARE POOR **TOGETHER** AND THOSE  
WHO ARE POOR **ALONE.** JEAN-PAUL SARTRE

**2013**

23 Jun–6th Jul  
& 1st–14th Dec

**2014**

30th Nov–13th Dec

West End, Queensland  
Hosted by people in the Waiters Union

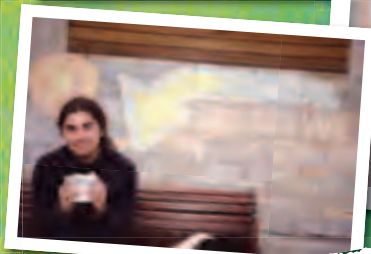
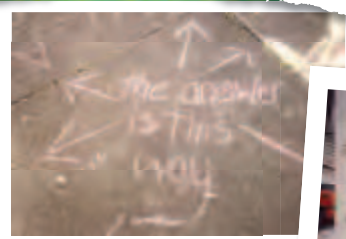


# COMMUNITY ORIENTATION COURSE

**An opportunity to explore** spirituality, community and compassion together with some people involved with the Waiter's Union community network in West End Brisbane.

This two week residential experience creates space for a small group of participants from any (or no) faith tradition to connect with others who want to learn more about developing a simple, practical, holistic and life-affirming community that is committed to peace & justice in the radical, non-violent tradition of Jesus.

**'The course has revolutionised my understanding of living with a vocation of caring for others. Be warned – this course might change your life'.**



**This grass-roots, face-to-face, do-it-and-discuss-it introduction to a gentle-but-radical Christ-inspired approach**

to compassionate community work will typically include a range of inputs in a variety of styles. All from local people who are involved with working alongside indigenous groups, migrants, refugees and others who are struggling with serious disadvantages and significant disabilities in the neighbourhood.

Numbers are limited so as to maximise the opportunity to connect and interact with people on the course and in the community. But the course is held twice a year to maximise the opportunity for people to do the course in small groups. More than 500 people from around Australia and abroad have done the course so far, and many have found it to be a transformative experience.

Participants will live together in a 'one star' community facility and will be invited to be involved as much as they can in personal reflections, interpersonal interactions and group processes around cooperative organisation, cross-cultural dialogue, practical service and non-violent action.

**Where** West End  
Brisbane Australia

**When** 2013 23 Jun–7th Jul  
& 1st–14th Dec

2014  
30th Nov–13th Dec

**Cost** There is no set cost!

We use a group cost-sharing exercise to work out payment for the course. This involves considering accommodation, food and living costs in relation to your own financial means.

For more information  
[communityorientationcourse@gmail.com](mailto:communityorientationcourse@gmail.com)  
[www.waitersunion.org](http://www.waitersunion.org)

Call **Di** 0412 668 651  
or **Dave** 0401 669 245